

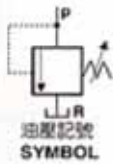


Pilot Operated Relief Valves(Thred Type)

引導作動型調壓閥 (配管式)



RV-04T, RV-06T, RV-10T



油壓記號 SYMBOL

選購指南 HOW TO ORDER

RV	04	T	B
系列編號 SERIES NUMBER	閥口徑 VALVE SIZE	接續型式 TYPE OF CONNECTION T:THREADED TYPE	壓力調整範圍 PRESSURE ADJ. RANGE

性能表 SPECIFICATION

型式 MODEL	壓力調整範圍 PRESSURE ADJ. RANGE (kgf/cm ²)	最高使用壓力 MAX.OPERATING PRESSURE (kgf/cm ²)	最大流量 MAX. FLOW /min	重量 WEIGHT (kg)
配管型 THRIAD TYPE				
RV-04T	B:7-70	250	100	2.4
RV-06T	C:35-140		200	4.2
RV-10T	H:70-210		400	7.0



Pilot Operated Relief Valves(SUB-PLATE Type)

引導作動型調壓閥 (座墊式)



RV-03G, RV-06G, RV-10G



油壓記號 SYMBOL

選購指南 HOW TO ORDER

RV	06	G	B
系列編號 SERIES NUMBER	閥口徑 VALVE SIZE	接續型式 TYPE OF CONNECTION G:SUB-PLATE TYPE	壓力調整範圍 PRESSURE ADJ. RANGE

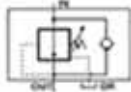
性能表 SPECIFICATION

型式 MODEL	壓力調整範圍 PRESSURE ADJ. RANGE (kgf/cm ²)	最高使用壓力 MAX.OPERATING PRESSURE (kgf/cm ²)	最大流量 MAX. FLOW /min	重量 WEIGHT (kg)
座墊型 SUB-PLATE TYPE				
RV-03G	B:7-70	250	100	5.3
RV-06G	C:35-140		200	6.7
RV-10G	H:70-210		400	11.6



Pressure Reducing and Check Valves

減壓閥附逆止閥



BRCV-03G BRCV-03T
BRCV-06G BRCV-06T
BRCV-10G BRCV-10T

選購指南 HOW TO ORDER

BRV	03	G	B
系列編號 SERIES NUMBER RC REDUCING RC REDUCING ADDED TO DESIGNATED INTEGRAL CHECK	閥口尺寸 VALVE SIZE	接續型式 TYPE OF CONNECTION G-SUB-PLATE TYPE T-THREADED TYPE	壓力調整範圍 PRESSURE ADJ. RANGE

性能表 SPECIFICATION

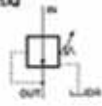
減壓閥型式號碼 MODEL		最高使用壓力 MAX. OPERATING PRESSURE (kgf/cm ²)	壓力調整範圍 PRESSURE ADJ. RANGE (kgf/cm ²)	最大流量 MAX. FLOW ℓ/min	洩油量 DRAIN ℓ/min	重量 WEIGHT (kg)	
座墊型 SUB-PLATE TYPE	配管型 THREAD TYPE	250	A:3-35 B:7-70 C:35-140 H:70-210	50	0.8-1	4.7 4.4	
BRV-03G	BRV-03T					6.8 7.5	
BRV-06G	BRV-06T					11.5 13	
BRCV-03G	BRCV-03T					5.6 4.8	
BRCV-06G	BRCV-06T					8.6 8	
BRCV-10G	BRCV-10T					13.8 13.8	

BRV-03G BRV-03T
BRV-06G BRV-06T
BRV-10G BRV-10T



Pressure Reducing Valves

減壓閥



Pressure Switch

壓力開關



性能表 SPECIFICATION

壓力開關型式號碼 MODEL	壓力調整範圍 PRESSURE ADJ. RANGE (kgf/cm ²)	最高壓力 MAX. PRESSURE (kgf/cm ²)	重量 WEIGHT (kg)
JCD-02-S	3-30	70	0.8
AJCS-02	N:30-210	210	1
	NL:15-60	210	
	NLL:3-35	70	

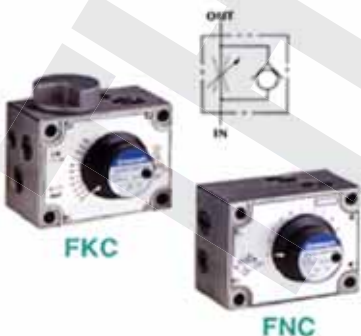
選購指南 HOW TO ORDER

AJCS	02	NL
系列編號 SERIES NUMBER	閥口尺寸 VALVE SIZE	壓力調整範圍 PRESSURE ADJ. RANGE



Flow Control Valves

流量控制閥



FKC

FNC

性能表 SPECIFICATION

型式 MODEL	最高使用壓力 MAX. OPERATED PRESSURE (kgf/cm ²)	流量調整範圍 WITHIN FLOW RATE ADJUSTING. ℓ/min	自由流量 FREE FLOW ℓ/min	重量 WEIGHT (kg)
FNC-G02	70	0.01-4	20	1.2
FNC-G03	70	0.01-8	30	1.9
FKC-G02	70	0.01-4	20	1.2
FKC-G03	70	0.01-8	30	1.9
FYC-G02	70	0.01-4	20	1.2

選購指南 HOW TO ORDER

FNC	G	02
系列編號 SERIES NUMBER	接續型式 TYPE OF CONNECTION G-SUB-PLATED TYPE	閥口尺寸 VALVE SIZE



Solenoid Operated Directional Control Valves

電磁切換閥

選購指南 HOW TO ORDER

AHD 方向切換閥 DIRECTIONAL CONTROL VALVES	G 配管方式 PIPING WAY	02 閥口徑 VALVE SIZE	3C2 閥芯種類 SPOOL TYPE	*** 電源電壓 AC110V/AC220V/AC110V DC12V/DC24V 電源動作 POWER SOURCE ACTION	10 接線方式 TYPE OF CONNECTION: 10: BOX type 25: DIN type
------------------------------------------------------	--------------------------------	--------------------------------	----------------------------------	---------------------------------------------------------------------------------------------	-----------------------------------------------------------------------------



BOX TYPE

特長:

- *提高性能，流量大而且減少內部抵抗。
- *附霓虹指示燈，可指示動作方向。
- *切換動作時，吸著音非常小而且振動小。

FEATURES:

- *Increase the performance for big flow with low resistance for the interior.
- *With neon pilot to indicate the direction of movement.
- *Conversion action is noiseless and small vibration.

型式 MODEL

口徑 D PT	最大流量 MAX. FLOW ℓ/min	最高使用壓力 MAX. PRESSURE (kgf/cm ²)	容許背壓 BACK PRESSURE ALLOWABLE (kgf/cm ²)	切換頻率 CONVERSION FREQUENCY
G02	60	350	70-160	300 RF120
G03	120	350	70-160	240 RF120



BOX TYPE

電磁線圈特性 FEATURES OF MAGNETIC COIL

電壓 (V) VOLTAGE(V)		起動電流 (A) START CURRENT		保持電流 (A) HOLDING CURRENT	
定額電壓 RATED VOLTAGE	使用範圍 RANGE OF USAGE	02	03	02	03
AC110V	99V-121V	2.45	4.4	0.41	0.55
AC220V	198V-242V	1.21	2.2	0.21	0.27
DC12V	10.8V-13.2V			2.6	3.8
DC24V	21.6V-26.4V			1.3	1.9
RF110V	99V-121V			0.38	0.54
RF220V	198V-242V			0.19	0.27



DIN TYPE

注意事項:

- *無彈簧形閥以水平安裝為妥。
- *安裝面與閥面同時保持3.2z表面。
- *R孔不能阻塞使用，否則影響效果。

NOTICES:

- *Springless shaped valve will be installed horizontally.
- *Installation surface and valve surface will keep 3.2z.
- *Rport shall not be blocked for use, otherwise, the effect will be influenced.

附屬品:

- *G02-螺絲 M5x45L.....4支
- *G03-螺絲 M6x35L.....4支

ACCESSORIES:

- *G02-Screw M5x45L.....4pcs
- *G03-Screw M6x35L.....4pcs



DIN TYPE

迴路種類明細表 LIST OF SPOOL FUNCTIONS (AHD-02, AHD-03)

彈簧偏位 二位置 SPRING OFFSET 2 POSITION	圖形符號 GRAPHIC SYMBOLS 標準組立 STANDARD ASSEMBLAGE	彈簧中心 三位置 SPRING CENTERED 3 POSITION	圖形符號 GRAPHIC SYMBOLS 標準組立 STANDARD ASSEMBLAGE	無彈簧 二位置 SPRING DETTENTED 2 POSITION	圖形符號 GRAPHIC SYMBOLS 標準組立 STANDARD ASSEMBLAGE
2A2		3C2		2D2	
2A3		3C3		2D3	
2A14		3C4		2D4	
2A2L		3C40		2D40	
2A3L		3C5		2D7	
2A14L		3C6		2D2A	
2B2		3C60		2D3A	
2B3		3C7		2D4A	
2B8		3C8		2D40A	
2B29		3C9		2D5A	
2B2L		3C10		2D6A	
2B3L		3C11		2D60A	
2B8L		3C12		2D7A	
2B29L		3C25		2D9A	
		3C29		2D10A	
		3C48		2D11A	
		3C94		2D12A	

• 迴路種類明細表 LIST OF SPECIAL TWO POSITION VALVES.(AHD-02, AHD-03)

彈簧偏位 二位閥 SPRING OFFSET 2 POSITION	圖形符號 GRAPHIC SYMBOLS		彈簧偏位 二位閥 SPRING OFFSET 2 POSITION	圖形符號 GRAPHIC SYMBOLS	
	標準組立 STANDARD ASSEMBLAGE	反向組立 ALTERNATED		標準組立 STANDARD ASSEMBLAGE	反向組立 ALTERNATED
2B2A			2B2B		
2B3A			2B3B		
2B4A			2B4B		
2B40A			2B40B		
2B5A			2B5B		
2B6A			2B6B		
2B60A			2B60B		
2B7A			2B7B		
2B8A			2B8B		
2B9A			2B9B		
2B10A			2B10B		
2B11A			2B11B		
2B12A			2B12B		
2B25A			2B25B		
2B29A			2B29B		
2B48A			2B48B		

G Gauge Cocks 壓力計考克



選購指南 HOW TO ORDER

ST	02	L
系列編號 SERIES NUMBER	端接口徑 VALVE SIZE	額定流量 : 180° VALVE SIZE L90°

性能表 SPECIFICATION

型式 MODEL		最高使用壓力 MAX. OPERATED PRESSURE (kg/cm ²)	定額流量 RATED FLOW l/min
直線型 180°	直角型 90°		
ST-02	ST-02L	210	2
ST-03	ST-03L	210	21
ST-04		210	30
GCT-02	GCT-02L	350	2
GCT-03	GCT-03L	350	21
GCT-04		350	30
SB-02		70	0.5

G Glycerine Pressure Gauges 壓力計



LBD-602P-10



LA-602P-150

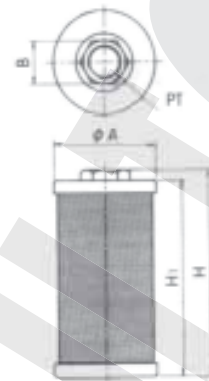
選購指南 HOW TO ORDER

LA	60	2P	150
系列編號 SERIES NUMBER	直徑 DIAL SIZE(mm) 40-1 1/2" 50-2" 60-2 1/2" 75-3" 100-4"	管牙 PT(inch) 1P: 1/8 PT 2P: 1/4 PT 3P: 3/8 PT 4P: 1/2 PT	最高壓力 MAX. PRESSURE (kg/cm ²)

性能表 SPECIFICATION

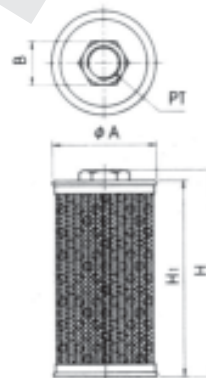
型式 MODEL	直徑 DIAL SIZE	管牙 PT	壓力 PRESSURE RANGE (kg/cm ²)
LA充油·無緣·立式 Fill oil, No side, Stand type	40mm 1 1/2"	1/8"	1 70
LB充油·有緣·立式 Fill oil, With side, Stand type	50mm	(1P)	2 100
LAD充油·無緣·埋入式 Fill oil, No side, Insert type	2"	1/4"	3.5 150
LBD充油·有緣·埋入式 Fill oil, With side, Insert type	60mm 2 1/2"	(2P)	5 200
PA一般·無緣·立式 Regular, No side, Stand type	75mm	3/8"	7 250
PB一般·有緣·立式 Regular, With side, Stand type	3"	(3P)	10 300
PAD一般·無緣·埋入式 Regular, No side, Insert type	100mm	1/2"	15 350
PBD一般·有緣·埋入式 Regular, With side, Insert type	4"	(4P)	20 400
			25 500
			30 700
			35 1000
			50

N TYPE SUCTION FILTER



型式編號 Model	口徑 PT	A mm	B mm	H1 mm	H mm	流量 Flow l/min	過濾精度(目) Filtration mesh	重量 Weight kg
N-04	1/2"	64	27	153	160	35	150	0.27
N-06	3/4"	64	34	153	166	46		0.28
N-08	1"	83	42	198	210	90		0.48
N-10	1 1/4"	103	53	215	231	150		0.77
N-12	1 1/2"	122	61	232	246	205		0.96
N-16	2"	122	74	317	332	320		1.27
N-20	2 1/2"	148	105	419	434	550		2.0
N-24	3"					600		2.68

MF TYPE SUCTION FILTER



型式編號 Model	口徑 PT	A mm	B mm	H1 mm	H mm	流量 Flow l/min	過濾精度(目) Filtration mesh	重量 Weight kg
MF-02	1/4"	54	21	86	92	20	100	0.09
MF-03	3/8"					25		
MF-04	1/2"					30		
MF-06	3/4"	66	34	121	137	55		0.15
MF-08	1"					70		0.18
MF-10	1 1/4"					210		0.21
MF-12	1 1/2"	85	61	177	194	285		0.32
MF-16	2"					395		0.42
MF-20	2 1/2"					550		1.07
MF-24	3"	158	109	252	275	600		2.45
MF-32	4"					1000		

FILLER BREATHER FILTERS



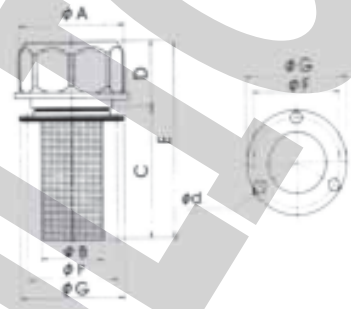
AB-1162



AB-1163(S)

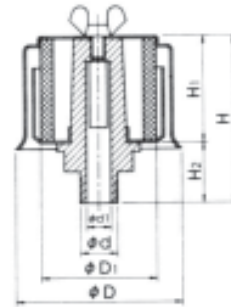


CB



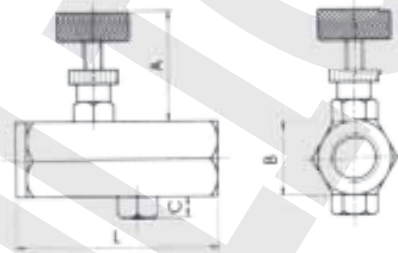
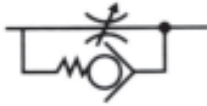
型式編號 Model	活動網口徑 Net Dia mm	A mm	B mm	C mm	D mm	E mm	F mm	G mm	d×孔數 Hole	過濾精度 Filtration micron	重量 Weight kg
AB-1162	32	53	31	65	34	99	45.5	53	φ6×3	400	0.07
AB-1162(S)											0.19
AB-1163	50	75	48	88	49	137	71	88	φ6×6		0.56
AB-1163(S)											
CB-16	53	86	48	108	39	147	For Tank Side Using /Welding		400	0.56	
CB-16D											0.58

AIR FILTERS



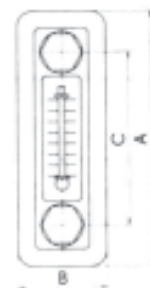
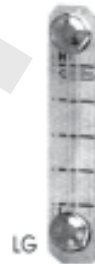
型式編號 Model	d PT	d1 mm	D mm	D1 mm	H1 mm	H2 mm	H mm	過濾精度 Filtration micron
AB-02	1/4"	8	52	41	36	22	58	40
AB-03	3/8"							
AB-04	1/2"	19	67	51	41	27	68	
AB-06	3/4"							
AB-08	1"	25	100	65	45	26	74	
AB-16	2"	48	130	92	90	37	130	
AB-20	2 1/2"	61	187	150	115	59	174	
AB-32	4"	113	210	165	140	50	193	

THROTTLE & CHECK VALVE



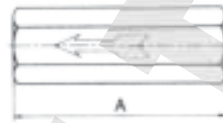
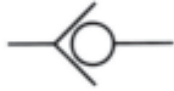
型式編號 Model	口徑 PT	A mm	B mm	C mm	L mm	流量 Flow l/min	材質 Material	最高壓力 Max. Pressure kgf/cm ²	重量 Weight kg	
PT-02	1/4"	40	23	7	62	12	(Steel)	230	0.24	
PT-03	3/8"	38	26		70	20	(Steel)		0.30	
PT-04	1/2"	43	32		10	81	30		(Steel)	0.50
PT-06	3/4"	47	41		12	92	48		(Steel)	0.92
PT-02N	1/4"	40	23	7	62	12	(Steel)	30	0.24	
PT-03N	3/8"	38	26		70	20	(Steel)		0.30	
PT-02	1/4"	40	23	7	62	12	(Copper)	30	0.24	
PT-03	3/8"	38	26		70	20	(Copper)		0.30	

FLUID LEVEL & TEMPERATURE GAUGES



型式編號 Model	A mm	B mm	C mm	D mm	E mm	F mm	重量 Weight kg
LS-3"	118	41	80	18	37	M10	0.18
LS-7"	180	52	127	19.5	46	M12	0.33
KS-3"	101	36.5	76	19	38	M10	0.10
KS-5"	151		127				0.12
LG-3"	105	25	74.5	13	46.5	M10	0.12
LG-4"	130		99				0.13
LG-5"	155		127				0.14
LG-200	230	28	200	25	54	M12	0.29
LG-300	330		300		63		0.38
LG-400	430		400		54		0.44
LG-500	530		500		54		0.52

INLINE CHECK VALVES



型式編號 Model	口徑 PT	A mm	B mm	流量 Flow l/min	最高壓力 Max. Pressure kgf/cm ²	重量 Weight kg
CV-03	3/8"	74	23	40	210	0.18
CV-04	1/2"	81	29	60		0.33
CV-06	3/4"	91	35	100		0.48
CV-08	1"	114	46	150		1.10
CV-10	1 1/4"	133	56	200		1.98
CV-12	1 1/2"	134	66	280		2.78
CV-16	2"	153	76.5	400	3.64	
CIT-03	3/8"	74	23	40	315	0.18
CIT-04	1/2"	81	29	60		0.33
CIT-06	3/4"	91	35	100		0.48
CIT-08	1"	114	46	150		1.10
CIT-10	1 1/4"	133	56	200		1.98
CIT-12	1 1/2"	134	66	280		2.78
CIT-16	2"	153	76.5	400	3.64	

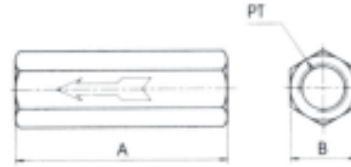
Remarks: The valve crack pressure of CV inline check valve are 0.5kgf/cm² and 5kgf/cm².

AIR BLEED VALVES



型式編號 Model	口徑 PT	A mm	B mm	重量 Weight kg
CV-02P	1/4"	54	22	0.10

EMERGENCY VALVES



型式編號 Model	口徑 PT	A mm	B mm	重量 Weight kg
CV-03Q	3/8"	74	23	0.18

High-Pressure 2-Way Ball Valves

BKH Steel
PN 500 bar

BKH Stainless Steel
PN 500 bar

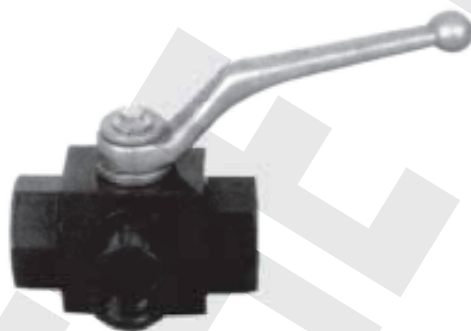


Block body : steel
Ball : steel, hard chromium plated
Ball seals : Delrin
Spindle seals : Perbunan (Buna N) or Viton

Theard (BSPP)	Order Code	Working Pressure Bar
G1/8"	BKH-G1/8	500
G1/4"	BKH-G1/4	500
G3/8"	BKH-G3/8	500
G1/2"	BKH-G1/2	500
G5/8"	BKH-G5/8	400
G3/4"	BKH-G3/4	315
G1"	BKH-G1	315
G1 1/4"	BKH-G1 1/4	315

High-Pressure 3-Way Selector Ball Valves

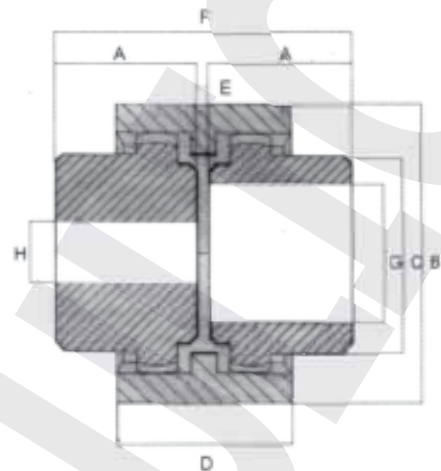
BK3 Steel
PN 315 bar



Block body : steel
Ball : steel, hard chromium plated
Ball seals : Delrin
Spindle seals : Perbunan (Buna N) or Viton

Theard (BSPP)	Order Code	Working Pressure Bar
G3/8"	BK3-G3/8"	315
G1/2"	BK3-G1/2"	315
G3/4"	BK3-G3/4"	315
G1"	BK3-G1"	315

DRIVE COUPLINGS

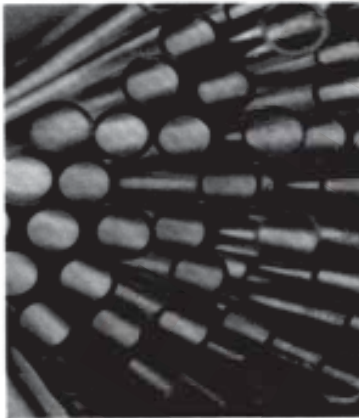


QUALIFICATION

1. Low cost , easy to assemble and no maintenance or lubrication needed.
2. Nylon sleeve with two steel gears drive hubs.
3. Have a crowned tooth form at gears , so will permit axial and angular misalignment.

MODEL	Max Speed R P M	Proper Horse Power	Weight kg.	A	B	C	D	E	F	G			H
				MM	MM	MM	MM	MM	MM	Max Bore	Min Bore	Pilot Bore	
SP - 28	5000	1 - 5	1	40	67	44	38	4	84	28	10	10	
SP - 42	5000	5 - 10	2	42	87	60	52	4	88	42	10	10	
SP - 55	4000	10 - 20	5	60	121	80	64	4	124	55	19	19	

SEAMLESS PRECISION STEEL TUBE



Seamless cold drawn St37.4 high quality tube, clean, annealed, normalised, free of scale, phosphated and oiled.

Outer dia. mm.	Wall thickness mm.	Pressure bar.	max. pressure	Weight kg/m
6	1	389	1680	0.123
8	1	333	1190	0.222
8	1.5	431	1860	0.24
10	1	282	870	0.222
10	1.5	373	1380	0.314
12	1.5	353	1150	0.388
12	2	409	1580	0.493
14	2	403	1340	0.592
15	1.5	282	980	0.499
16	1.5	264	820	0.536
16	2	353	1170	0.691
18	1.5	235	780	0.61
20	2	222	920	0.888
20	2.5	353	1220	1.079
22	2	256	850	0.985
25	2	226	670	1.134
25	2.5	282	920	1.387
25	3	338	1050	1.628
28	2	201	620	1.282
30	3	284	920	1.998
30	4	376	1250	2.565
35	2.5	201	620	2.004
38	4	297	970	3.354
38	5	371	1350	4.069
42	3	201	580	2.885

- >Material St37.4
 - >To DIN 2391, sheet 2 grade C
 - >Suitable for cold bending and flaring (with use of appropriate tooling)
 - >Weldable by using recognised welding methods
 - >Normalised(NBK)
 - >Annealed, phosphated and oiled
 - >Supplied with plastic plugs on tube ends
- Computation: The wall thickness is to be computed according to DIN 2413.
 Characteristic Values - Steel tube
 Yield point 235 N/mm²
 Safety factor: 3:1 Approx